



ASLA IDAHO/ MONTANA

INSIDE THIS ISSUE:

Message from Chapter President.....2
News Bites..... 3
IMASLA Features.....4-6
IMASLA Student Spotlight.....7
Upcoming Events.....8
Public Awareness.....9



P.O. Box 8224
Boise, ID 83707
www.idmtasla.org
info@idmtasla.org

Thousand Springs State Park - Billingsley Campground
Graphic Credit: Breckon Land Design, Inc

Greetings IMASLA Members

Chapter President, Maggie Clark

Fall Newsletter

The air is crisp and the leaves are starting to change. As I write this, I'm struck by how many changes are upon us. It has been an incredible past few months. The U.S. Department of Homeland Security designated landscape architecture as a STEM discipline, promising exceptional future practitioners and promoting the rigor of the work we complete daily. Additionally, for those going through the licensure process, CLARB has started its official realignment of the L.A.R.E. to ensure its test assesses the content identified in its Job Task Analysis survey.

In our region, we hosted the inaugural Intermountain Climate Summit to evaluate the impacts of climate change on our practice and share the successes and challenges that we face when designing for an uncertain climate future. Also, we closed voting for IMASLA's various leadership positions a few weeks ago and will begin changing the roles and responsibilities for some members, while adding plenty of new faces and fresh ideas in the coming months. For me, this letter formalizes my transition to the position of past-president. I am grateful for you trusting me to guide the chapter and I have truly enjoyed the past two years as your chapter president.

With all those changes observed, it's important to note that many crucial things remain. We continue to be engaged community members, volunteering our time at the Tater Tot Trail/NPS public planning charrette and the Boise Urban Garden School. We continue to celebrate our students' achievements by offering speaking opportunities at the Intermountain Climate Summit, evaluating student portfolios, and visiting studio classes. And we continue to advocate for our climate, communities, and profession on a daily basis.

Best wishes for a fantastic fall,

Maggie Clark, PLA
IMASLA Chapter President



RAISE THE ROOF

Bring New Light to Nightlife

TRANSFORM ANY GREEN ROOF INTO A THRIVING NIGHTTIME OASIS with total outdoor lighting solutions from FX Luminaire. Partner with us to illuminate beautiful green infrastructure in the communities where we live, work, and play.



LANDSCAPE & ARCHITECTURAL LIGHTING | [Learn more. Visit fxl.com](#)

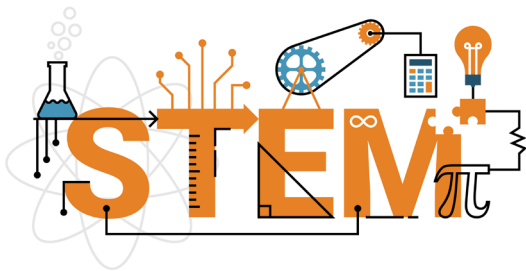
FXLuminaire®

STEM Classification U.S. Department of Homeland Security

The U.S. Department of Homeland Security has designated landscape architecture a STEM discipline. The designation recognizes the high degree of science, technology, engineering and mathematics course work required in landscape architecture collegiate programs.

This new designation rightfully places landscape architecture alongside other STEM disciplines. Landscape architecture firms and universities will be able to recruit from a broader talent pool. And, as a STEM discipline more young people will now be introduced to the profession.

This has been a priority for the ASLA team for several years and a lot of work went into gaining this distinction.



Graphic Credit: U.S. Department of State



Create a timeless moment.™

CLARB

L.A.R.E. Changes

Every 5-7 years CLARB conducts a Job Task Analysis survey (JTA) which is a scientific study of the profession of landscape architecture. The study ensures that the content of the L.A.R.E. remains legally defensible and relevant to the practice of landscape architecture. The results of this study are also used to defend the legal scope of landscape architectural practice. Following the study, any necessary changes are identified and then incorporated into the L.A.R.E. The findings from this JTA have resulted in changes to the content and structure of the L.A.R.E. The first administration of the new L.A.R.E. blueprint will be in December 2023. With the new blueprint, CLARB will provide feedback on how candidates performed on the sub-domains of the exam. This feedback will only be provided to candidates who failed the exam.

The old sections were (1) Project and Construction Management, (2) Inventory and Analysis, (3) Design, (4) Grading, Drainage, and Construction Documentation. The new sections will be (1) Inventory, Analysis, and Project Management, (2) Planning and Design, (3) Construction Documentation and Administration, (4) Grading, Drainage, and Stormwater Management. You can read more information and watch new blueprint webinars at <https://www.clarb.org/take-the-exam/2023-l.a.r.e.-changes#web>.



A Riverfront Dream - The Tater Tot Trail

Residents and city leaders in Ontario, Oregon have long dreamed of a multi-use trail along the Snake River. Perhaps more ambitiously, they envisioned a trail connection across the river to Idaho. Trail planning received a significant boost this spring through the NPS partnership with the American Society of Landscape Architects (ASLA). Six members of the Oregon and Idaho-Montana ASLA chapters volunteered on April 14-15 to help RTCA lead a design workshop with the city's Ad Hoc Trail Committee. Design concepts for the 3+ mile trail, shared with the public and elected officials, show how a trail along the river can connect existing and new parks, enhance habitat and expand access to recreation and nature in Ontario.

Community Engagement Boise Urban Garden School | Boise, ID

Boise Urban Garden School Volunteer Day

A group of seven local design professionals joined the Boise Urban Garden School, a non-profit outdoor natural education school, for some volunteer work on June 17th. The group toured the garden's farm-to-fork site and got a first-hand lesson in the hard-work that goes into bringing quality food to our collective tables. After a day of weeding, transplanting, and pea picking the group came away with excellent professional partnerships and some dirt under their fingernails. In fact, a local Parks representative would like to partner with local firms on future natural play designs. Thanks to this team of Matthew Adams, Jenine Estlick, Alexandra Vega, Kira Wise, Tyler Wolf, Emily Voges, and Kiley Gardiner for giving a good portion of their weekend to a worthy cause and advocating for the role of landscape architecture in fostering exceptional natural spaces.



Photo Credit: The Land Group

Climate Commitment Intermountain Climate Summit

Intermountain Climate Summit Highlights

IMASLA's special events committee hosted the inaugural Intermountain Climate Summit on September 21, 2023. The half-day virtual event allowed members to receive CEUs and to discuss challenges facing our region in the face of an uncertain climate future. Additionally, presentations celebrated innovation and climate-responsive design efforts across the region. A keynote address from one of ASLA's Climate Action representatives, as well as interesting regional studies of climate research gave excellent opportunities to consider how our region has integrated the ASLA Climate Action Plan into our daily practices. Additionally a diverse Climate Resiliency Panel offered robust discussion of several engaging topics.

The special events committee came away from the event energized and convinced that future virtual summits would be valuable to membership.



Pixel Collection

Mix and Match, Shape and Stack

maglin.com/products/pixel

800.716.5506



BOUNCER

ACCESS WHIRL

SPACE NET

ASLA Gold Sponsor

LUCKYDOG
recreation
in pursuit of play™

1-800-388-2196
LuckyDogRecreation.com

Berliner
Play equipment for life

Tournesol
SITEWORKS
Successful sites start here™

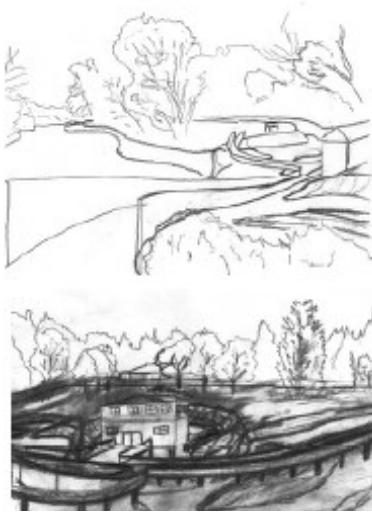
Student Spotlight University of Idaho



Samuel Smith | Senior, University of Idaho

Meet our student spotlight Samuel Smith! He is the newly-elected President of SCASLA at the University of Idaho and is a Senior working toward his MLA. He was born and raised in Boise, Idaho and when asked if he had to pick one plant to represent his hometown he would pick the River Birch. His current plan after graduation is to acquire an internship at a firm and continue on his studies for his Master's degree. His top 3 plants for a sensory garden would be the American Sweet Gum, the False Blue Indigo, and Lavender. One of the most inspiring spaces he's ever been in has been St. Peter's Basilica in Rome, Italy. His favorite xeric plant is the Mock Orange; he loves its aroma and abundance of flowers when in full bloom.

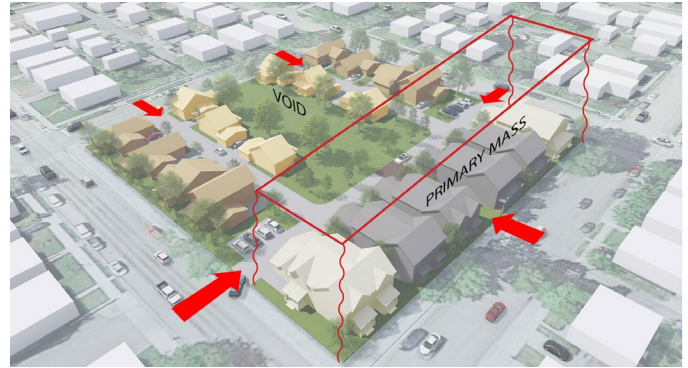
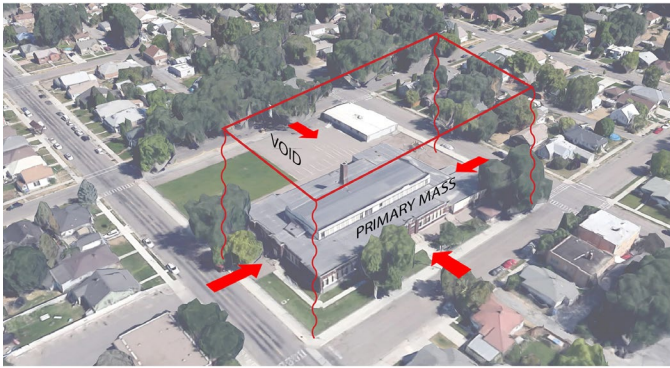
2023 IMASLA Student Honor Award Winner | Robert Castelo, MLA Candidate, University of Idaho



2023 IMASLA Student Merit Award Winner | Zachary Heffernan, MLA Candidate, University of Idaho



Upcoming Events Advocacy | Site Tour Pocatello, ID



Early Concept Massing Study
Graphic Credit: The Land Group

Advocacy Site Tour Highlights

The Idaho-Montana Chapter of the American Society of Landscape Architects (ASLA), will host a special guided tour for public policy makers and their staffs of an award-winning residential infill development by the non-profit, NeighborWorks® Pocatello, on October 5th, 2023 at 2:00 PM at 962 E Lander Street, Pocatello, ID 83201. This project, named Bonneville Commons for its seamless integration into the Bonneville Neighborhood and its replacement of the abandoned Bonneville School Building, represents the intersection of public policy, research-based planning, community engagement, and pioneering design to strengthen community.

Federal, state, county and city elected officials and their staffs are invited to attend the walking tour, co-lead by the project's design and development teams, to learn about how landscape architects create spaces to improve peoples lives and strengthen communities, as well as the role that non-profit development organizations like NeighborWorks® play in addressing the complex issue of housing affordability and community development throughout our region.

Bonneville Commons, a Planning and Analysis Honor Award recipient from the Idaho-Montana Chapter of the American Society of Landscape Architects, reimagines the formerly shuttered Bonneville Elementary School block as a new model of sustainable development for the city. This legacy project was planned, designed, and entitled by the integrated design team from The Land Group and Myers-Anderson Architects to bring 26 high-quality housing units to the two-acre school site that sat largely untouched for nearly two decades. The project's exceptional outcomes include the amendment of the city's infill development code that will facilitate future investment in the city's urban core, an approved plat for housing that will provide direct relief to a region desperately seeking quality workforce housing, and an exceptional community designed in step with the Bonneville neighborhood that enables residents at different life-stages to find comfort and community.

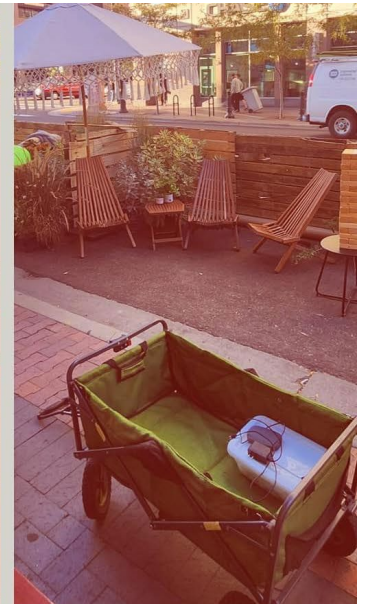
This site tour, co-led by The Land Group's Principal Landscape Architect, Matthew Adams, and NeighborWorks Pocatello's Executive Director, Mark Dahlquist, is an informal opportunity to see the transformative impact of infill development patterns, modernized zoning ordinance, and exceptional commitment to livable communities from landscape architects and non-profit developers. The one-hour tour will highlight the project's unseen planning efforts (such as demographic and market analysis and code amendments), the collaborative effort between landscape architects, engineers, architects, planners, and the owner, as well as the highly visible design decisions of landscape architects that help make the project a success.

Site Tour Details

- October 5, 2023 at 10:00 AM (Students) 2:00 PM (Public Officials).
- Bonneville Commons, 962 E Lander Street in Pocatello, ID.

Public Awareness PARKing Day

PARKing day has continued its wide adoption throughout the country. Our region participated heartily on Friday September 15th. Members and students put together some creative parklets to help advocate for safer, greener, and more equitable streets for people in their communities. Check out some of the designs that were shared with us.



A DAY WHERE PEOPLE ACROSS THE WORLD TEMPORARILY REPURPOSE STREET PARKING SPACES AND CONVERT THEM TO TINY PARKS AND PLACES FOR ART, PLAY, AND ACTIVISM.



PARK(ING) DAY

2023



PARKing Day in Moscow
Photo Credit: UI SCASLA