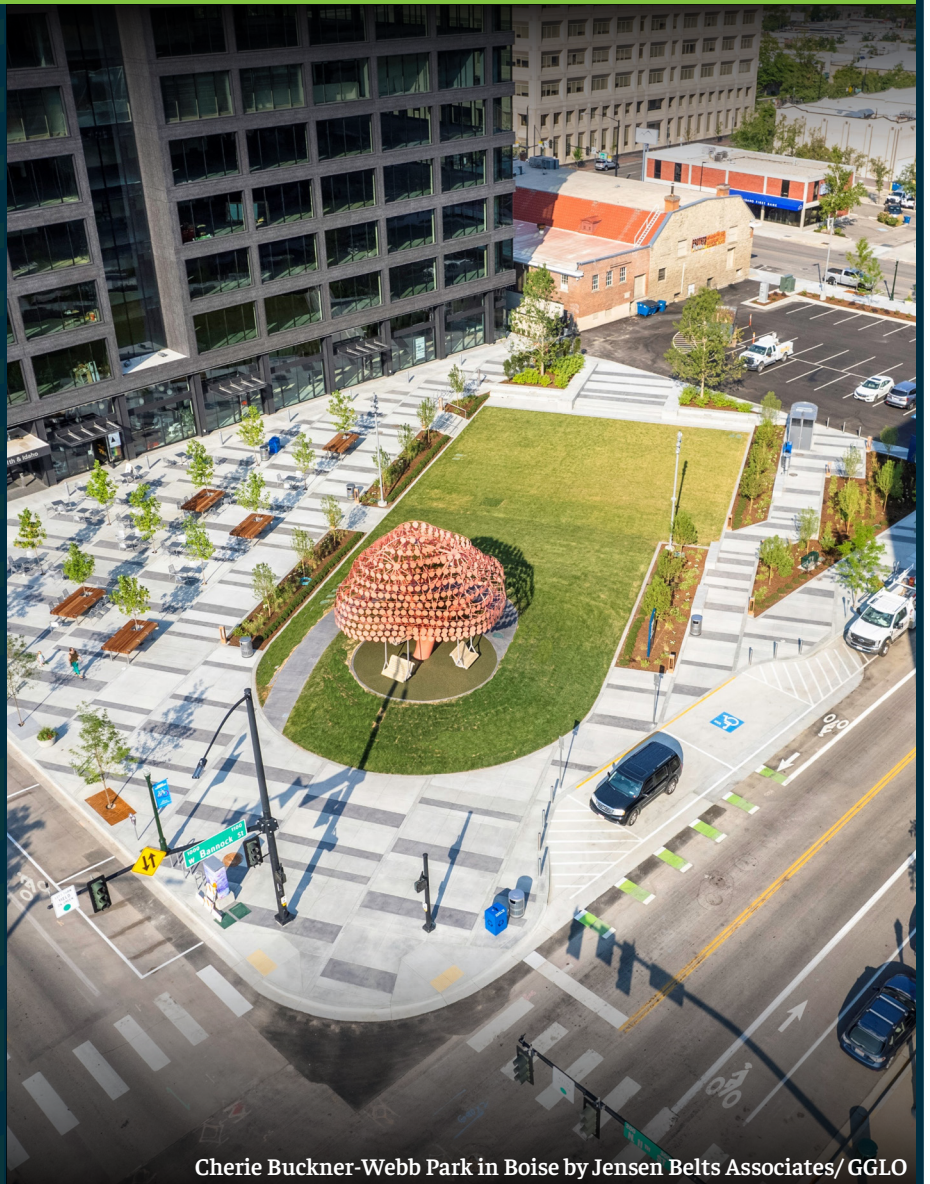




ASLA IDAHO/ MONTANA

INSIDE THIS ISSUE:

Message from Chapter President	3
News Bites	5
Celebrating 125 years of ASLA	6
WLAM	7
Chapter Committee Spotlight	8
Upcoming Events	9



P.O. Box 8224
Boise, ID 83707
www.idmtasla.org
info@idmtasla.org

Cherie Buckner-Webb Park in Boise by Jensen Belts Associates/ GGLO

Greetings IMASLA members

Chapter President, Christopher Hawkins

IMASLA Member and Friends,

Spring is upon us, and I look forward to the budding of my favorite trees and shrubs as I welcome back the sun.

Spring also brings the end to the 2024 Idaho Legislative Session (Montana Legislature did not convene in 2024). While the pursuit of restrictions on licensure for landscape architects within Idaho was not as aggressive as in years past, House Bill 505 was passed in both chambers of the legislature and signed into the law by the Governor. According to the Statement of Purpose, this bill “...update(s) all licensure renewals under the Division of Occupational and Professional Licenses to a biennial renewal cycle, with an expiration date at the licensee’s birth month. This will allow for consistency in renewal cycles throughout the Division.” With the passing of this legislation, we are reminded that we must continue to track legislation that impacts our members and advocate for our profession within our legislatures. The Executive Committee for the Idaho-Montana Chapter of ASLA is making it a priority to get ahead of legislation for the 2025 sessions in both Idaho and Montana and we call on all our members to use the resource ASLA provides to multiply the voices of landscape architects. If we are not visible and vocal, we will not be heard.

April is World Landscape Architecture Month (WLAM), and what better opportunity to share your exciting work and the value our profession brings to the world we all share. Please take time this month to participate in ASLA’s WLAM initiatives.

As I sit in my office this afternoon, enjoying the delights of the sun on the trees – birds chirping and all – I am encouraged to end with a positive message. Our chapter is filled with talented, interesting, and uplifting individuals. Please join us in 2024 as we advocate for and grow the profession. I look forward to seeing you at some of this year’s events. See you at IMASLA’s 2024 Rendezvous in Bozeman, Montana.

Kind regards,

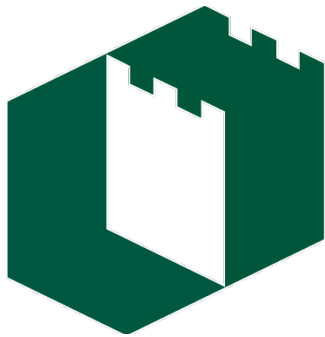


Christopher Hawkins, PLA
IMASLA – Chapter President



Berliner

Play equipment for life



Oldcastle[®]



BELGARD
COMMERCIAL



BELGARD[®]

Women Work Panel

The Professional Development Committee organized a panel on February 22nd discussing the unique challenges that women encounter in the design firm workplace and how we can achieve individual and company success through a greater level of understanding. This event was sponsored by Victor Stanley and the attendees earned 1.0 PDH through LA/CES. The panel was made up of three women in varying stages of their careers: Alexis Townsend, President & Principal at Lombard Conrad Architects, Ann Moyer, RLA, ASLA, LEED AP with Place Landscape Architects, and Carrie Iverson, Landscape Architect in Training at Breckon Land Design. The following topics were discussed:

- Leadership – “55% of landscape architecture college graduates are women. However, only 27% of licensed landscape architects are women, and only 12% of advanced leadership positions in firms are held by women.” (architecture: 42% of graduates, 17% of licensed architects, and 10% in leadership positions).
- Ambition – Recent headlines suggest that women are becoming less ambitious. However, recent survey data tells a different story. Women are as committed to their careers and as interested in advancement as men.
- Flexible Work – When surveyed, half of women and a third of men point to “offering significant flexibility in when and where employees work” as a top-three factor in their company’s future success.

The panel discussion was skillfully moderated by Matthew Adams, President & Principle at The Land Group. There were 125 attendees from all over the US, including 13 states identified in the chat. Big shout out to Victor Stanley, who did a great job promoting the event. Some of the takeaways were:

1. Identify core working hours with flexibility on the balance of hours.
2. Accommodate both men and women when it comes to parental needs.
3. Have a round-table discussion within the office to discuss needs/desires being met and not met.
4. Provide mentorship and seek mentors with similar experiences.
5. Develop ways for staff to self-advocate in a supported manner.

The panel was very well received and sparked conversations that continued inter-firm after the formal discussion had ended. This what we want – to get people talking and thinking about how we can all benefit from maintaining a diverse firm profile. So have the conversation, think about a way to rework a rigid work place schedule. The firm could be loosing out on valuable talent by doing what has always been done.

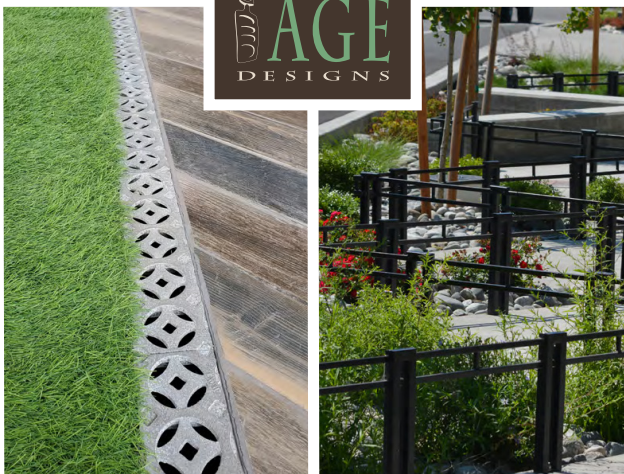
IMASLA member Celeste Penny shared her thoughts on the event: “I think it was a huge success and led to some great thought provoking conversations within our team afterwards. It was a valuable experience to have a platform to discuss topics and issues that everyone faces within any firm but is not often talked about amongst firms. I look forward to the next one!”

Website Events Calendar

Did you know you can find upcoming chapter events on our website? If you go to idmtasla.org, click on the home button, and then click on the news & events tab. It will take you to the page where all the upcoming chapter happenings will be listed. We’re working on making more of a conscious effort to keep our website updated so all our members are aware of what we’re up to. Be sure to check it out!

Celebrating 125 years of ASLA

This year marks the 125th anniversary of the American Society of Landscape Architects. ASLA was founded on January 4th, 1899 in New York City with 11 charter members. Since then, it has grown to 49 chapters across the United States supporting and advocating for our profession. Our chapter was founded in 1973 and has been serving our community of Landscape Architects across Idaho and Montana for 51 years now. ASLA has invited us to share our favorite ASLA memories and moments with them. If you have a favorite memory you would like to share you can send in your story at asla.org/125.

A graphic for ASLA Gold Sponsor featuring a gold paw print and the text 'ASLA Gold Sponsor' in a stylized font. The background is green with faint icons of a horse, a building, and a microscope.

Bounce It

Spin It

BOUNCER

ACCESS WHIRL

LUCKYDOG
recreation
in pursuit of play™

1-800-388-2196
LuckyDogRecreation.com

Climb It

SPACE NET

Berliner
Play equipment for life

The graphic is a collage of images related to playground equipment. It includes a child jumping on a bouncer, a child spinning on a whirl, a child climbing a space net, and a child in a wheelchair on a ramp. The background is green with faint icons of a horse, a building, and a microscope.

It's that time of year again - April marks World Landscape Architecture Month.

Join us in celebrating the impact of Landscape Architecture on our world and help us to inspire future generations of landscape architects. As a chapter we have reached out to libraries across our two states and will be providing a week long display showcasing what WLAM is at the following locations throughout the month: Billings, Caldwell, Boise- Hillcrest, and Pocatello. There will be a hands on informational workshop for k-12 students at the Marshal Public Library in Pocatello to build mini parks in terrariums and teach kids about landscape architecture. We will also have the informational coloring books provided by Nationals for the attendees.

If you're looking for ways you as an individual can celebrate, advocate, and educate in your own community check out some great ideas from ASLA at asla.org/wlam2024. Another easy way to share your unique perspective is by joining the conversation on social media using the hashtag #WLAM2024.



2023 WLAM display at the Pocatello Library

We'd also love to showcase the work that you have been doing on our chapter social pages as well. You can send us photos of WLAM outreach events and your in-process or completed projects by e-mailing Celeste Penny at celestialvalle@gmail.com. Include a brief description including location, notable materials or features, and your social media handles to tag you in and we'll share them for you across our IDMTASLA social media platforms.

#WLAM

Chapter Committee Spotlight

PR Committee

The PR committee has been working hard to get information out to the chapter and the public. This committee is responsible for:

- creating quarterly newsletters
- organizing any chapter-led activities for WLAM and PARKing Day
- sharing upcoming events and news with membership and on social media
- organizing any chapter-wide socials

We love sharing industry updates, professional achievements and events, and anything that the membership at large would benefit from. To submit updates, news, and project photos that you would like us to feature, contact Celeste Penny at celestialvalle@gmail.com.

IMASLA is always looking for more committee members so if any of this sounds like something you would like to become involved with, let us know!

RAIN  **BIRD**®



Create a timeless moment.™

Upcoming Events

MAKE >>> 2024

MOVES

RENDEZVOUS
BOZEMAN | MT

Rendezvous

Bozeman, MT
September 19-21

Register by May 14th for Early Bird pricing!

A note on behalf of the University of Idaho ASLA Student Chapter:

It is a very valuable experience on so many levels to have students attend Rendezvous and there will be no registration fee for students! However, since the Rendezvous is at MSU this year, there are significant travel and lodging costs for University of Idaho landscape architecture students. To help, we are offering the opportunity for IMASLA chapter members to aid them financially to ensure as many U of I students as possible can take advantage of this opportunity. If you are able, donate via Venmo using the QR code below. Thank you!



U of I SCASLA
@UISCASLA



venmo